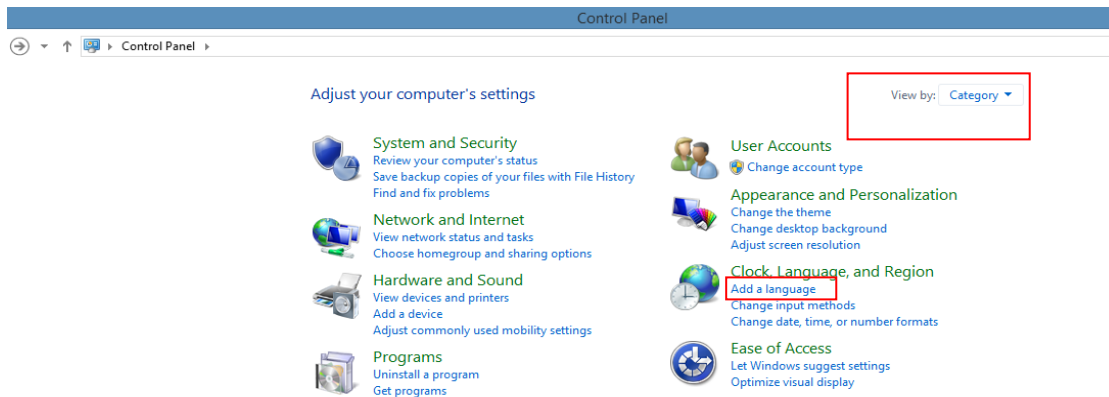


Bilingual Keyboard Layout Selection Procedure



Windows 10/ Windows 8.1/Windows 8: Follow the below procedure if the OS used is Windows 10/ Windows 8.1/Windows 8

Go to control Panel (Windows+R to open run and type control panel) and select add a language option from clock, language, and region





Select Add a language option as highlighted below

Language

Control Panel > All Control Panel Items > Language

Search Control Panel

Control Panel Home

[Change your language preferences](#)

Advanced settings

Change date, time, or number formats

Add languages you want to use to this list. The language at the top of your list is your primary language (the one you want to see and use most often).

Add a language Remove Move up Move down

English (United States)	Windows display language: Enabled Keyboard layout: US	Options
English (India)	Keyboard layout: English (India) Date, time, and number formatting	Options

List of Language will be displayed; select the required language and save the option

Add languages

Control Panel > All Control Panel Items > Language > Add languages
Search languages

[Add a language](#)

Use the search box to find more languages.

Group languages by: Language name

A

Afrikaans <small>Afrikaans</small>	shqip <small>Albanian</small>	Elsässisch <small>Alsatian</small>	አማርኛ <small>Amharic</small>	العربية <small>Arabic</small>	Հայերեն <small>Armenian</small>	অসমীয়া <small>Assamese</small>
Азәрбајҹан дили <small>Azerbaijani (Cyrillic)</small>	Azərbaycan dili <small>Azerbaijani (Latin)</small>					

B

বাংলা <small>Bangla</small>	Башҡорт <small>Bashkir</small>	euskara <small>Basque</small>	Беларуская <small>Belarusian</small>	Босански <small>Bosnian (Cyrillic)</small>	bosanski <small>Bosnian (Latin)</small>	brezhoneg <small>Breton</small>
Български						

Added language appears in the list

Language

Control Panel
All Control Panel Items
Language

of Panel Home

Change your language preferences

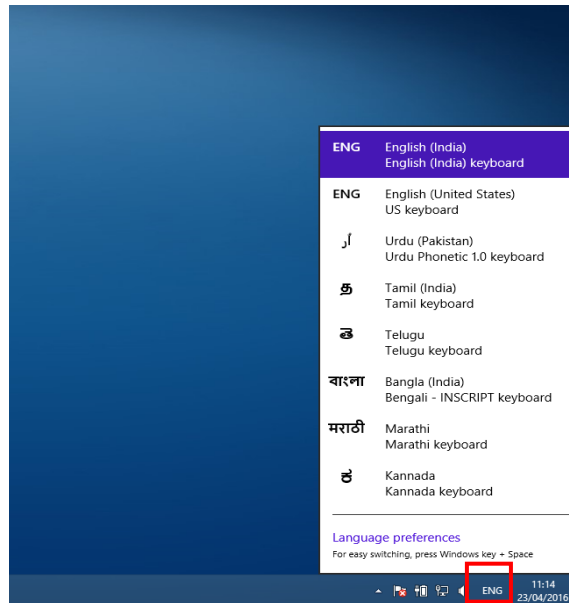
Add languages you want to use to this list. The language at the top of your list is your primary language (the one you want to see and use most often).

Add a language
Remove
Move up
Move down

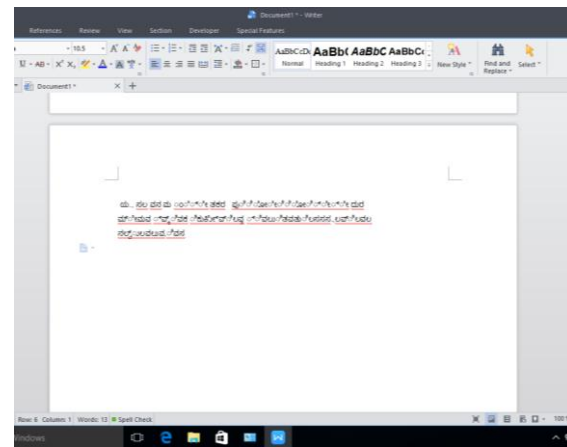
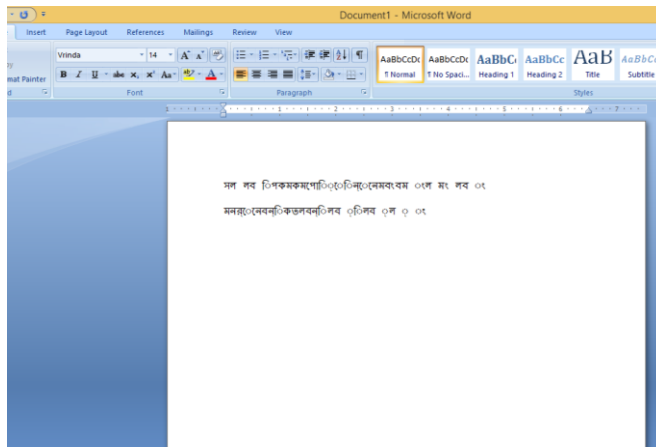
English (United States)	Windows display language: Enabled Keyboard layout: US Date, time, and number formatting
தமிழ் (இந்தியா)	Keyboard layout: Tamil
తెలుగు	Keyboard layout: Telugu
മലയാളം	Keyboard layout: Malayalam
ଓଡ଼ିଆ	Keyboard layout: Odia
ਪੰਜਾਬੀ	Keyboard layout: Punjabi
मराठी	Keyboard layout: Marathi

5

Language can be selected from the language bar indicated below. Use windows space bar to switch between languages.

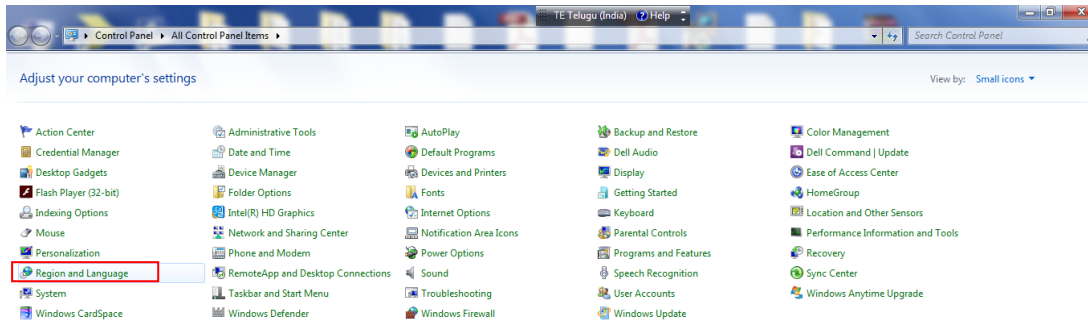


Application:

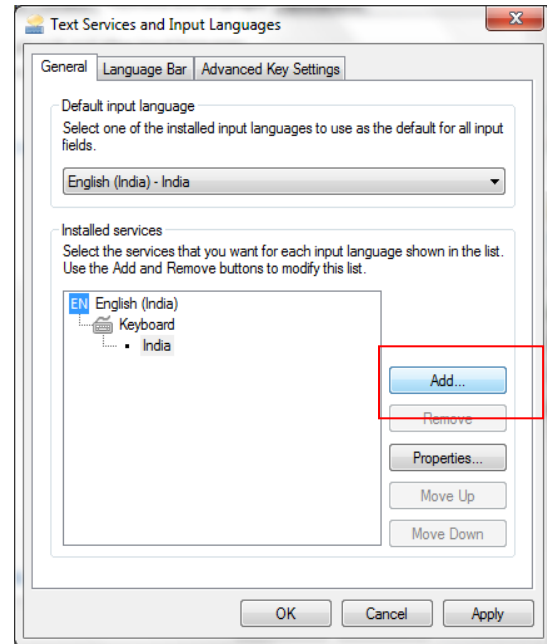
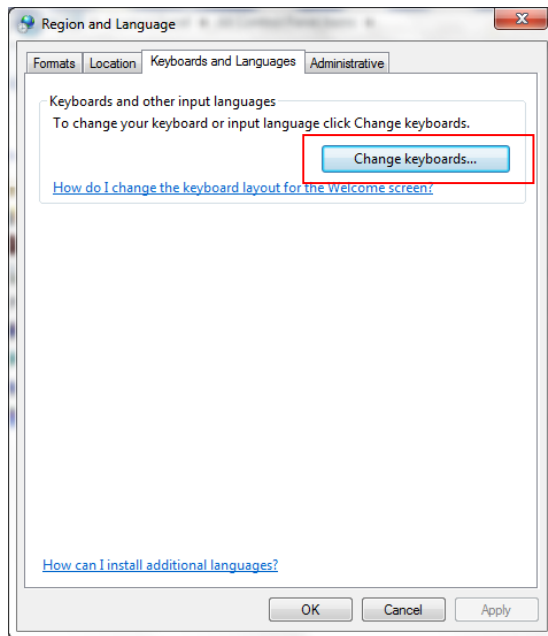


Windows 7 32bit/64 bit: Follow below procedure if the OS is windows 7

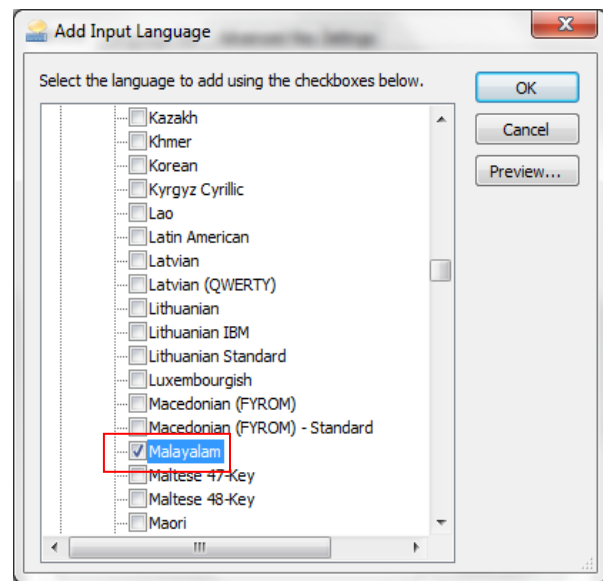
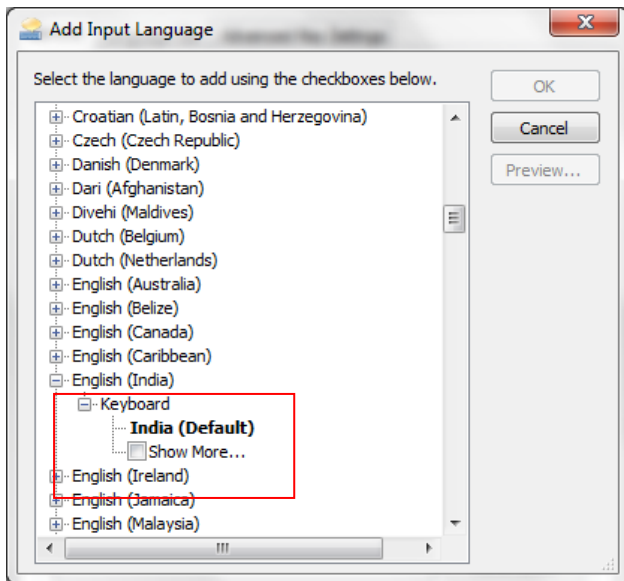
Go to control panel and choose Region and language option



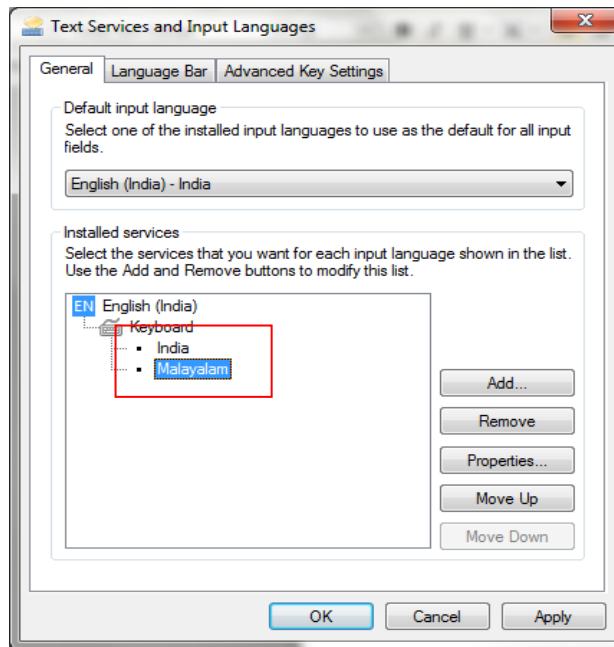
Follow below 2 steps



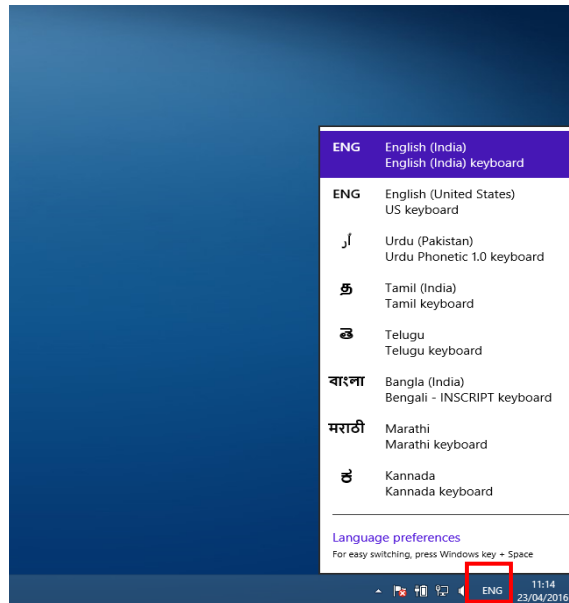
Select show more options from Indian keyboards layout and choose the desired language and click on OK.



Once the language layout is selected it appears In the list (refer image below)

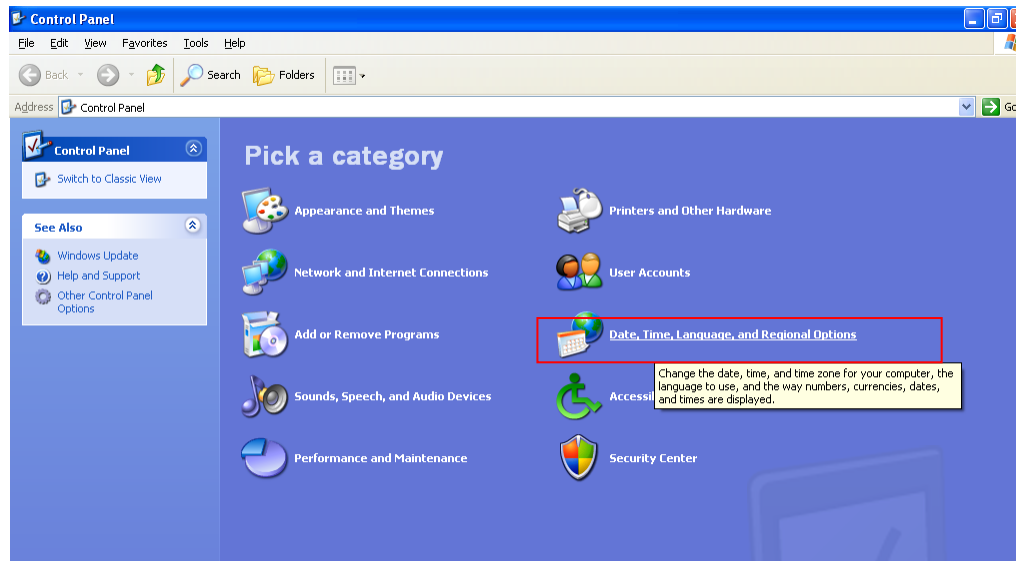


Language can be selected from the language bar indicated below. Use windows space bar to switch between languages.

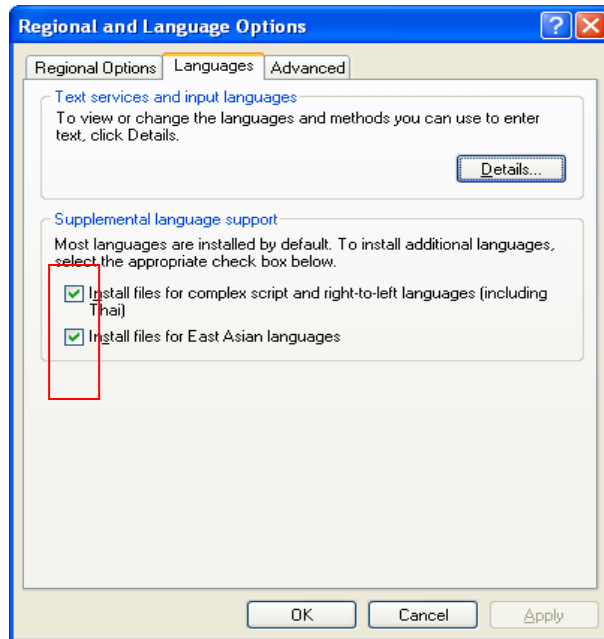


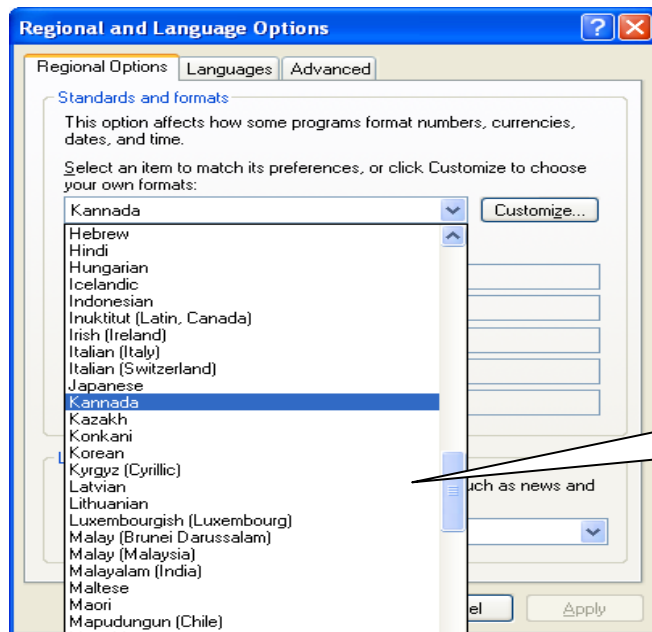
Windows XP:

Go to Control panel and select Date, Time, Language and regional options



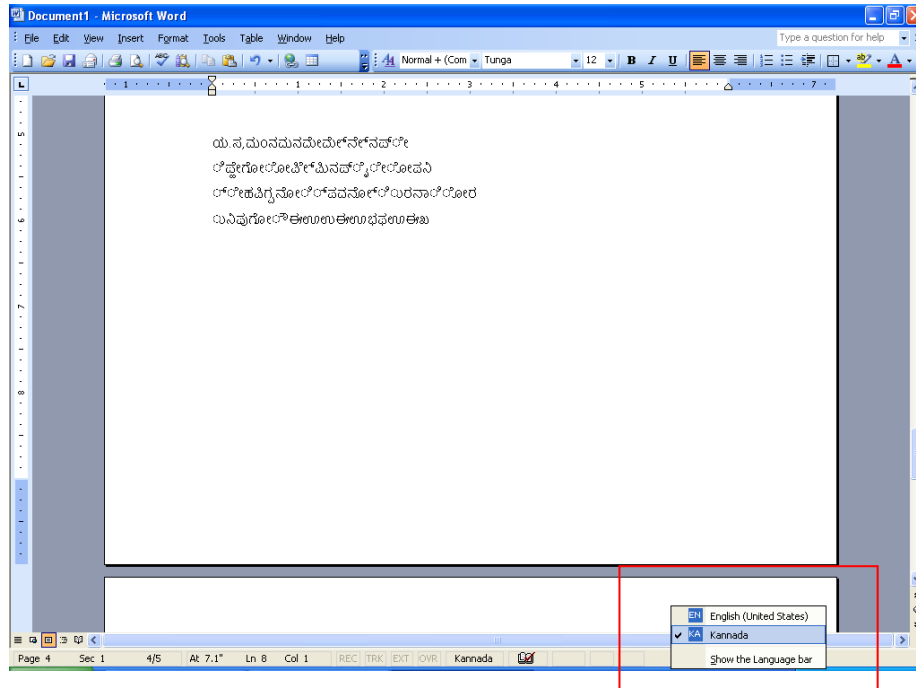
Select the 2 options and click apply.



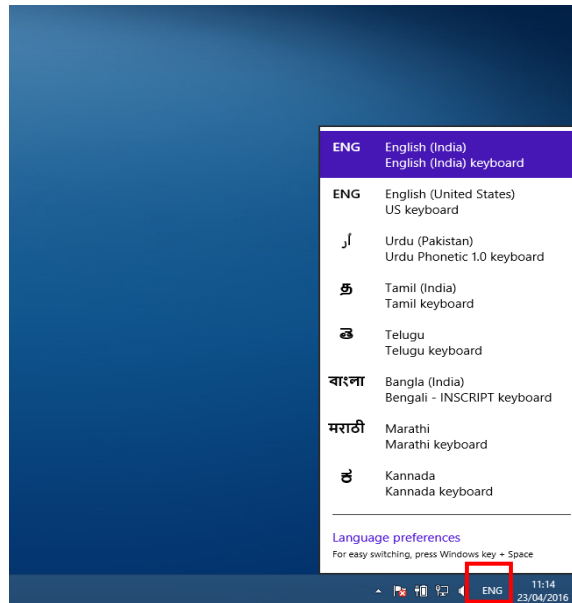


Select desired language and click on apply..

Typing in word: Use language status bar to switch between layouts



Language can be selected from the language bar indicated below. Use windows space bar to switch between languages.





Language and Fonts

Language	Font
Marathi	Mangal
Punjabi	Raavi
Bengali	Vrinda
Kannada	Tunga
Malayalam	Kartika
Telugu	Gautami/Vani
Oriya	Kalinga
Tamil	Latha

Layout: Inscript

Note: Font will be auto installed in All OS except Windows 10. For windows 10 font to be manually installed.